

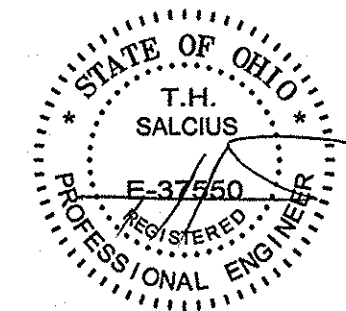
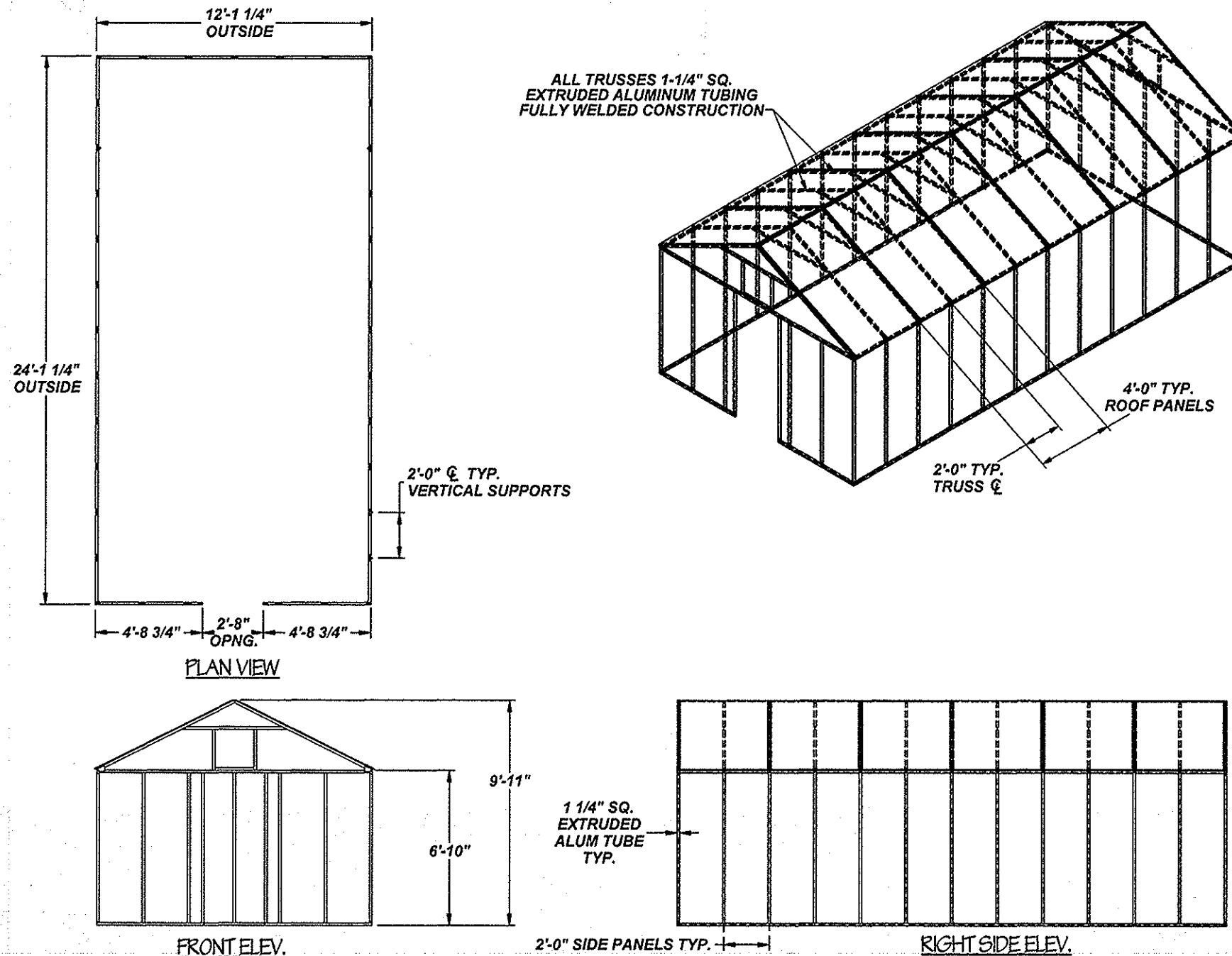
WIDTH	Hgt.	ANCHORS		Max. Wind Loading On Structure		Structural Members 6061 T-6 Alum. Tube			Max. Roof Snow Load Capacity *
		Dia.	Length	Horiz. Shear	Overturing Mom.	Rafters	Studs	Bottom	
8' - 0"	9' - 0"	3/16"	2 1/4"	81.5 lbs./lin. ft.	326 ft.lbs./lin. ft.	1 1/4" Sq x 1/8"	1 1/4" Sq x 1/8"	1 1/4" Sq x 1/8"	130 psf
10' - 0"	9' - 6"	3/16"	2 1/4"	81.5 lbs./lin. ft.	326 ft.lbs./lin. ft.	1 1/4" Sq x 1/8"	1 1/4" Sq x 1/8"	1 1/4" Sq x 1/8"	90 psf
12' - 0"	10' - 0"	3/16"	2 3/4"	81.5 lbs./lin. ft.	326 ft.lbs./lin. ft.	1 1/2" Sq x 1/8"	1 1/2" Sq x 1/8"	1 1/2" Sq x 1/8"	100 psf

SITE DATA

BASIC WIND SPEED: 105 MPH
GROUND SNOW LOAD: 30 PSF *
IMPORTANCE FACTOR: I
EXPOSURE CATEGORY: B
USE GROUP: U

NOTE: *

Standard Snow Loads Partially Exposed Location.
Also Considers A Heated Slippery Roof



Rev. 1: ASCE 7-05 to 7-10: 7/27/2011

Thomas H. Salcius P.E.
Painesville, Ohio

ARCADIA GLASSHOUSE LLC.
20 Park Road, Painesville, Ohio 44077

Data Sheet For Standard 8'-0", 10'-0" & 12'-0"
Wide Free Standing Greenhouses

SIZE	FSCM NO.	DWG NO.	REV
		A-2295-01	1

SCALE SHEET OF